

GULF ISLAND BEAUTY



3602 SAILOR EASEMENT ROAD





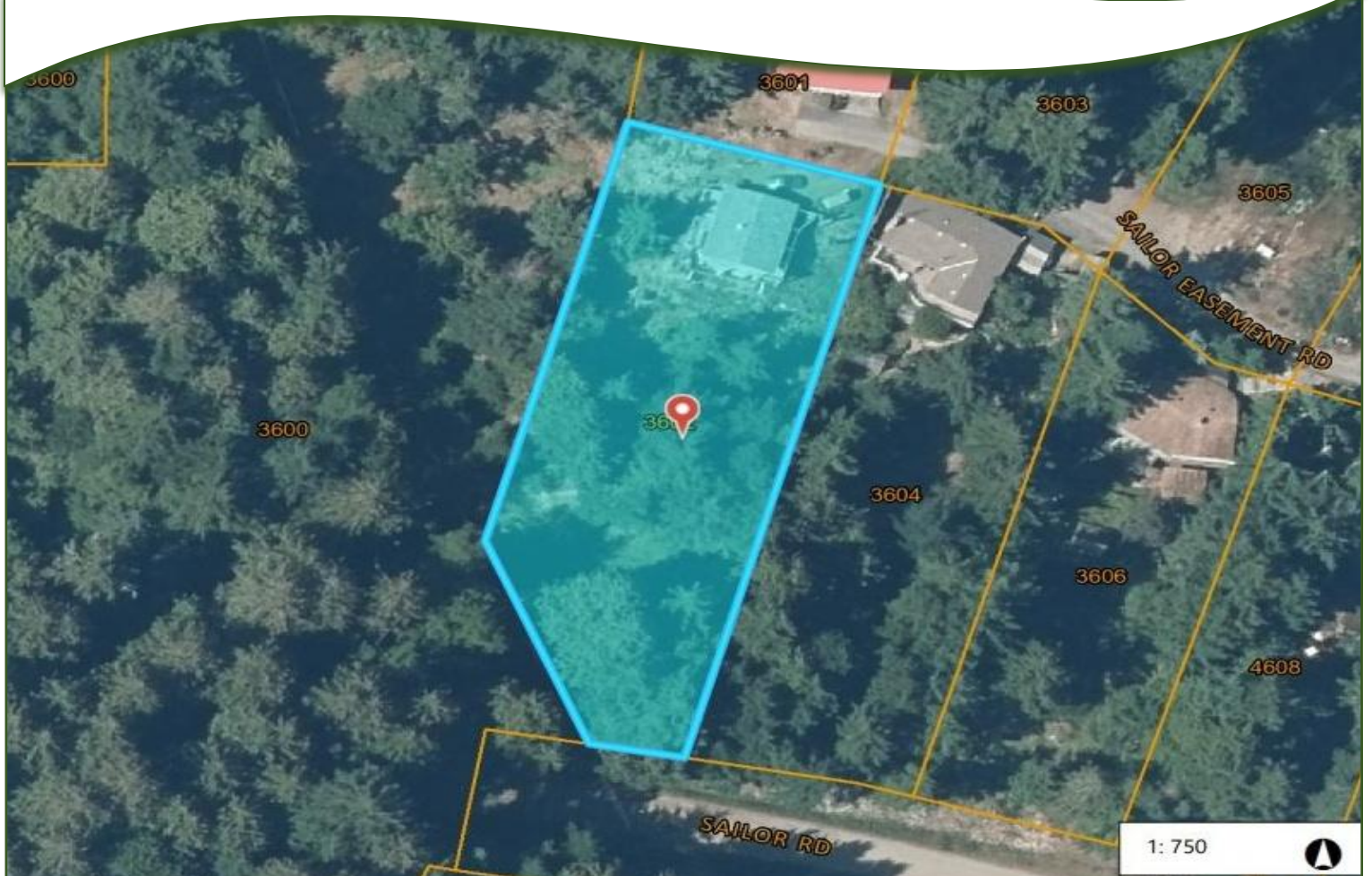
3602 SAILOR EASEMENT ROAD

2 BEDS ~ 1 BATHS ~ 1,050 SQFT

Nestled at the top of a ridge, tucked away at the end of a private lane bordering protected forest, this beautiful cedar cottage has been lovingly cared for! Main level offers 2 bedrooms, 1 bathroom, open plan kitchen and living area accessing over 700 sq. ft. of sun soaked deck! Lower level includes an office/studio/guest space, ample laundry/workshop area and awesome storage! Outside level at majestic stands of Douglas fir and Cedar surrounding you in nature! Easy care property enjoys desirable southern exposure, wonderful deer proof veggie garden and an extensive network of rock sculpture complemented by a variety of mature plantings. Great location is near walking trails including Lively Peak Park and just minutes' drive to swimming on Magic Lake, Thieves Bay Community Marina & several ocean access points. Offered turnkey with most principal furnishing included, this one is ready to go and beckons you to retreat, relax and embrace life at the end of the road!

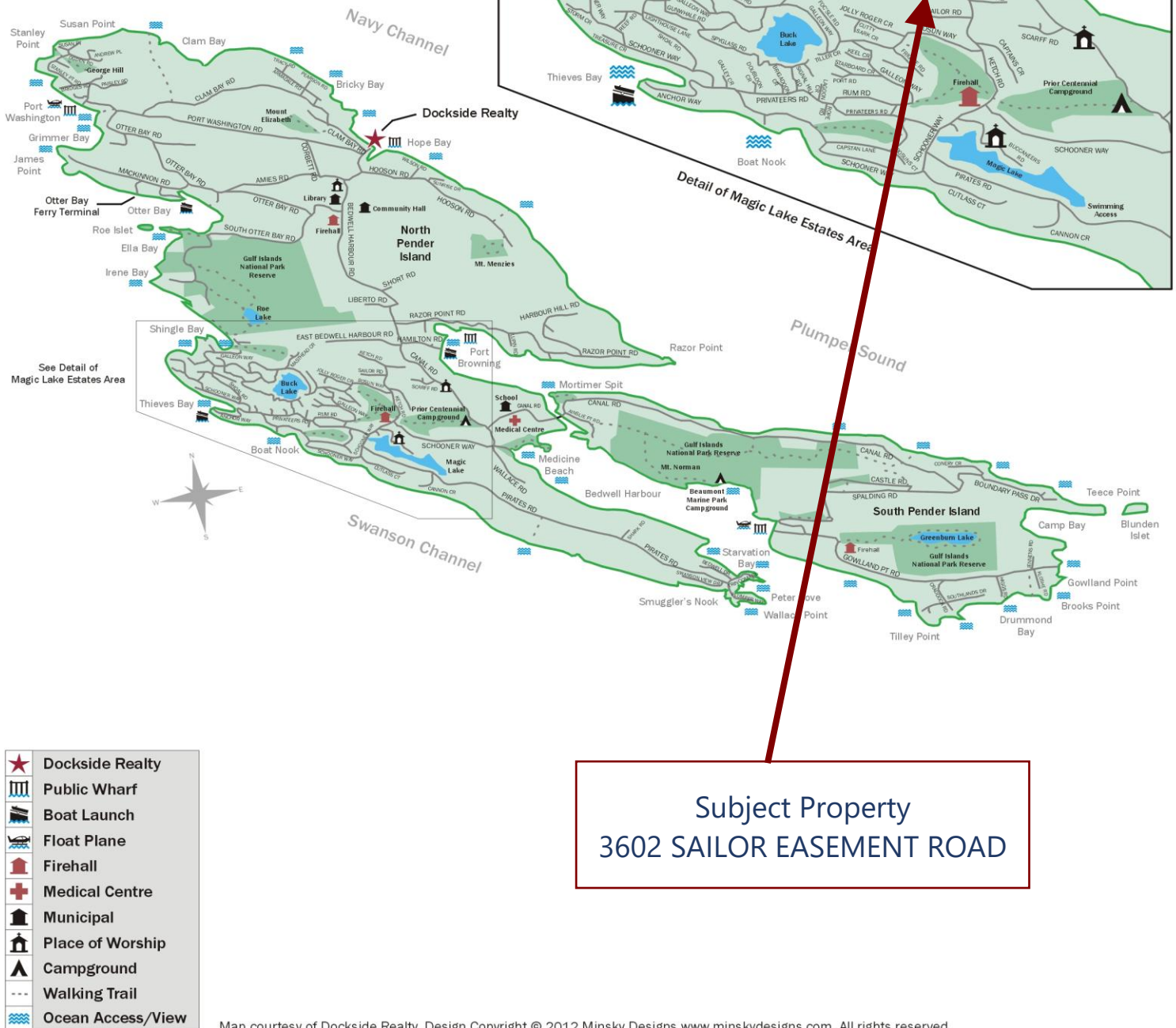


PLOT PLAN & AERIAL VIEW



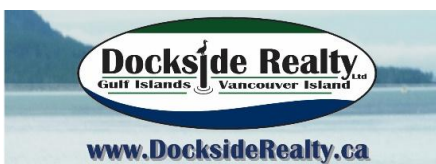
PENDER ISLAND MAP

Pender Islands British Columbia, Canada



Subject Property
3602 SAILOR EASEMENT ROAD

DISCLAIMER: While every effort is made to provide reliable information, Dockside Realty Ltd. makes no representations or warranties as to the accuracy of this brochure. All measurements are approximate; the buyer is responsible for verifying all data provided.



Pender Island • Saturna Island • Vancouver Island
info@DocksideRealty.ca • 250-629-3166